

CRS Saitama strives to contribute to the formation of a recycling-oriented society and help to alleviate material shortages by separating and recycling materials even down to the level of individual screws, and because using recycled automobile parts produces less CO2 emissions than using new parts, we contribute to the fight against global warming by actively producing recycled automobile parts and promoting the knowledge and use of such parts. By carrying out modern, integrated line processing operations consisting of every process from collection of end of life vehicles (ELVs) to disassembly and crushing, we increase the efficiency of our operations and successfully coexist with the natural environment and regional communities and building harmony, we have been a leading, modern company in eradicating the negative preexisting images of the scrap industry, and we plan to remain a company which attempts to contribute to the well-being of the planet for the next 100 years



Company Profile



Name	: CRS Saitama Co.,Ltd.		
The main office	: 2-8-36 Yoshinodai Kawagoe-Shi Saitama-ken 350-0833		
The establishment	: February 10,2004		
Capital	: 390,000,000 yen		
Executive officers	: Kazuomi Kato ,CEO Koji Misawa ,Managing Director Yoshimasa Aoki ,Director Kazuo Kii ,Director		
The number of employees	: 60 people		
Description of Business	: Buying and selling of used automobile parts Scrapping of end-of-life vehicles Recycling of various materials from end-of-life vehicles Acquisition and transport end-of-life vehicles All other services pertaining to the above businesses		
A participation group	: NGP Japanese car recycling business co-op Limited liability cooperative non-profit corporation Japan ELV recycling mechanism		
The certification	: ISO14001		
Permission	Taking care of business	Governor of Saitama	22010134
	Freon collection business	Governor of Saitama	32010016
	A housebreaking	Kawagoe city	21033000104
	Crush business	Kawagoe city	21034000104
	Dealer in secondhand antique		
	The Saitama Public Safety	Safety Commission	431080013498
	Industrial waste collection transportation		
		Kawagoe city	10300113395
		Saitama City	10100113395
		Saitama	1102119965
		Tokyo	1300113395
		Kanagawa	1402113395
		Yokohama City	5600113395
		kawasaki City	5700113395
		Sagamihara City	9800113395
		Yokosuka City	5802113395
		Chiba	1200113395
		Chiba City	5500113395
		Funabashi City	10400113395
		Ibaraki	0801113395
		Gunma	10001133395
		Tochigi	0900113395
		Utsunomiya City	8400113395
	Forwarding service permission		
		Kanto Department of Transportation	39378

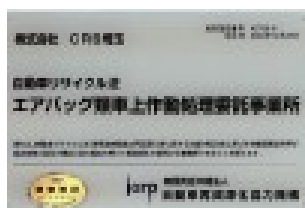
Company Profile



Dealings bank : Bank of Tokyo-Mitsubishi UFJ, Musashio bank, Saitama Resona Bank
 Office : Parts center Tire shop Distribution center
 Group enterprise : Aokishouten Co.,Ltd Aoki Co.,Ltd AK-logi Co.,Ltd

Entrepreneur recycling system

Entrepreneur code	Receipt trade	100239700109
	Fluorocarbon	100219700103
	Dismantlement	100219700104
	Crushing trader	100221900105
	Used car exporter	100219700117



▲AQSIQ認定書

Features of CRS, Saitama

Dedicated to be professionals in the industry of car-recycling to meet the needs of our clients. The Aoki Group has been well-established for 50 years, in the process of recovery and recycling of ferrous and nonferrous materials and the distribution of such materials to the appropriate industries. Thus, with CRS, Saitama, we shall take the industry of recycling used automobiles, by storm. For a better value assessment on the recovered used vehicle, we do not dismantle the body. Instead, through our distribution process, we shall deliver the whole vehicle to the client when a request is made.

Our varied distribution process involves _Reselling of used cars, _Exporting of used cars overseas, _Supplying used parts to the local market and _Supplying used parts for Japanese cars overseas.

In addition, as a side business, in order not to waste but to fully make use of the ferrous and nonferrous materials from cars that have been removed of their parts, _we recycle them as raw materials.

We aim to develop an eco-friendly system for the industry of end-of-life vehicles that is both cutting-edge and complies with the legislation to automobile recycling, which was established on January 2005, to meet all the needs of this industry.

The era of mass production, mass consumption and mass disposal is slowly losing its appeal. Instead the world of reuse and recycling is experiencing a drastic development.

Thus, at CRS, Saitama, alongside with the world of resources recycling, we dedicate ourselves in the development of this industry through the strong trusting relationships with our clients and the society.

A modernized, continuous in-line process in line with the Automobile Recycling Law

The Automobile Recycling Law clarifies the roles of businesses engaged in each step in the recycling process to ensure the proper and efficient recycling and processing of ELV to prevent the development of new environmental problems. These steps include (1) the taking over of ELV (registration system), (2) the recovery of chlorofluorocarbons (registration system), (3) scrapping (licensing system), and (4) shredding (licensing system). Businesses must register and received approval to conduct operations in each step.

By working through this procedure in a modernized, continuous in-line process, CRS Saitama is helping to greatly expanding the recycling rate and meets the requests of the industry by supplying higher quality recyclable parts and steel-making resources.

Additionally, on top of managing data records on the receipt and delivery of ELV and reporting electronic manifests (transferable reports) to the information management center via the internet, CRS Saitama is devoted to making meticulous use of and maintaining computer networks.



Main Factory



We carry out thorough recycling down to each and every screw in the spirit of "mottainai", a Japanese concept of regret over waste.

Our main factory holds all licenses stipulated under the ELV Recycling Law and carries out all processing under strict regularity compliance. The "mottainai spirit" forms the basis of CRS' corporate stance. We have received ministerial accreditation as a total recycling contractor in order to promote this concept. We commercialize every reusable part from ELVs obtained from customers and thoroughly and carefully separate and recycle all non-reusable parts down to the last screw.

2-8-36 Yoshinodai Kawagoe-shi Saitama-Ken 350-0833

TEL : 049-228-5111 FAX : 049-228-5113

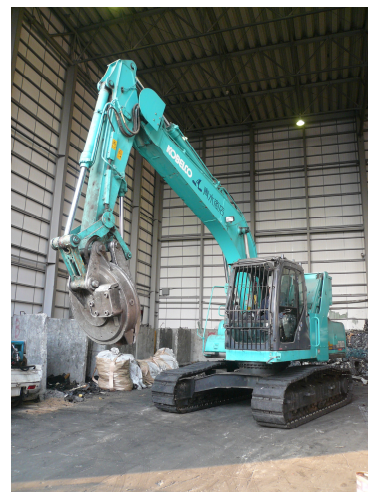
Area of factory : 6000m²

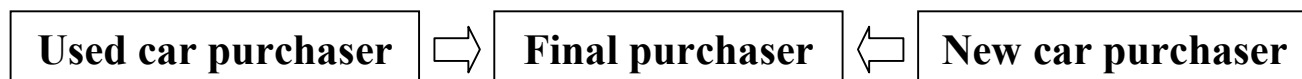
Factory processing capacity: 2500 vehicles/month

Processing facilities: Automobile scrappers 2 units

Magnetic Crane 1 unit

Three sided compactor 1 unit





- ① **Take-over :**
promptly take over one or more cars
- ② **Freon extraction and air-bag collection :**
Extract Freon and collect air-bags after inflating them
- ③ **Parts removal :**
Carefully select and Remove reusable parts
- ④ **Fuel and liquid drainage :**
Drain fuel and liquids such as engine oil, and gasoline etc.
and dispose of them separately
- ⑤ **Scrapping :**
Disassemble material by material carefully by hand and heavy machinery,
Without using a shredder
- ⑥ **Pressing :**
Press high quality metal with 0.3% or less Cu and recycle As material
for steel making

Deliver to electric steel makers



①

②

③

④

⑤

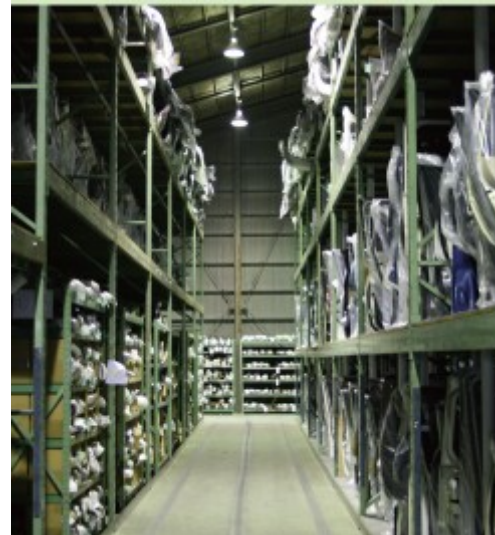
⑥



**We have realized an online network with 200 companies nationwide.
We recycle all parts that have any value with no waste.**

CRS Saitama seeks to thoroughly implement a policy of "restoring all products with value to the market as recycled parts". We only provide our customers with low cost, high quality products which have passed through our rigorous testing processes in line with our "the customer always comes first" policy. We also participate in the NGP group in order to deliver the products required by our customers as fast as possible. We share 1,150,000 parts from 200 companies nationwide as well as 20,000 parts from our own company online and provide information on recycled parts at all participating shops and companies nationwide. The parts centers carry out centralized storage and management of information as well as shipping of orders to customers nationwide.

205 Yanaka Kawagoe-Shi Saitama-Ken 350-0836
TEL : 049-277-8811
FAX : 049-223-7173
Area of warehouse : 1300m²
Area of office : 300m²



Tire Shops



Disposing of good quality tires is wasteful, so we separate out the highest quality products and provide them customers.

Based on a motto of "selecting good quality used tires and providing them at low prices", we select only the best quality items from among the 10,000 tires generated from our main factory every month and sell the tires and aluminum wheels to individual users through shops and the internet. The wide product range includes everything from 12 inch light automobile tires to large diameter 20 inch tires, as well as meeting the needs for studless tires in the winter. The condition of all products is thoroughly checked before they are offered for sale, and can be removed and attached at specialized pits on-site.

292-1 Hikawachou Kawagoe-Shi Saitama-Ken 350-0851

TEL: 049-227-5573 FAX: 049-227-5574

Area of store : 700m²

Products handled: Used tires, used wheels, used audio systems, etc

Dealer in secondhand Antique :

The Saitama Public Safety Safety Commission 431080013498



Used automobile export



We also carry out export to 20 countries worldwide in addition to our domestic recycling operations.

CRS Saitama's used automobile export business carries out export to 20 countries worldwide through auctions, lease-up and other stocking methods.

This wide variety of vehicles obtained through auctions, lease up and other methods, and ranging from older vehicles to accident vehicles, are then offered at reasonable prices.



Main Export Countries

Ireland, United Arab Emirate (Dubai), Republic of Uganda, Commonwealth of Australia, Republic of Austria, Republic of Guatemala, Republic of Georgia, Republic of Kenya, Democratic Republic of the Congo, Republic of Zambia, United Republic of Tanzania, Republic of Trinidad and Tobago, New Zealand, Bangladesh, Republic of Botswana, Russian Federation, Great Britain, Republic of South Africa, et al.



▲あらゆる車両を輸出

▲自動車輸送船



Used Part Export



We also actively handle the export of used parts to meet the needs of customers in a number of countries throughout the world.

In order to provide used parts for the Japanese automobiles used in every corner of the globe, CRS Saitama exports used parts to a variety of countries throughout the world. This includes parts for everything from compact cars to large trucks and specialized vehicles, with part types including over 100 items from engines to nuts and bolts. We also handle a variety of detailed and specific requests such as half-cuts and nose cuts, in order to meet the needs of our overseas customers.

25-30 Miyako Namegawamachi Hiki-Gun
Saitama-Ken 355-0812
TEL:0493-58-1555 FAX:0493-57-0555
Lot area : 11500㎡
Area of warehouse : 7000㎡
Area of office : 550㎡



▲コンテナ積み

